

DESPIECE

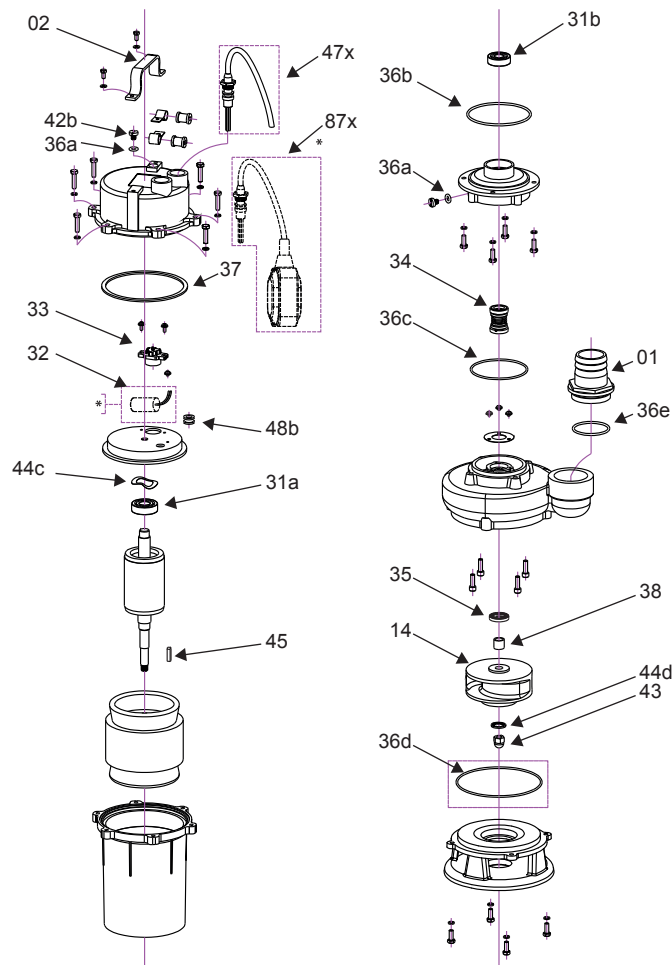


TABLA DE REFACCIONES

POSICIÓN	REFACCIÓN			CÓDIGO
		ROBUSTA2/10/1127A	ROBUSTA2/10/1230A	
01	CONECTOR MANGUERA	✓	✓	R-ROB2/10-ADAP
02	ASA	✓	✓	R-ROB2/10-ASA
14	IMPULSOR	✓	✓	R-ROB2/10-IMP
31a	BALERO SUPERIOR	✓	✓	R-ROB2/10-BALSUP
31b	BALERO INFERIOR	✓	✓	R-ROB2/10-BALINF
32	CAPACITOR 20UF	✓	✓	R-ROB2/10-CAP20UF
33	RELE	✓	✓	R-ROB2/10-RELE
		✓	✓	R-ROB2/10-RELE2
34	SELLO MECÁNICO	✓	✓	R-ROB2/10-SELLOM
35	RETÉN	✓	✓	R-ROB2/10-RETEN
36a	EMPAQUE	✓	✓	R-ROB2/10-EMPAQ36A
36b		✓	✓	R-ROB2/10-EMPAQ36B
36c		✓	✓	R-ROB2/10-EMPAQ36C
36d		✓	✓	R-ROB2/10-EMPAQ36D
36e		✓	✓	R-ROB2/10-EMPAQ36E
37	JUNTA TORICA	✓	✓	R-ROB2/10-JTORICA
38	BUJE DE FLECHA	✓	✓	R-ROB2/10-BUJEF
42b	TORNILLO 42B	✓	✓	R-ROB2/10-TORN42B
43	TUERCA 43B	✓	✓	R-ROB2/10-TUER43
44c	ARANDELA	✓	✓	R-ROB2/10-ARAN44C
44d		✓	✓	R-ROB2/10-ARAN44D
45	CUÑA ROBUSTA 2/10	✓	✓	R-ROB2/10-CUÑA
47X	CONECTOR 10M	✓	✓	R-ROB2/10-CON127
		✓	✓	R-ROB2/10-CON230
48b	EMPAQUE 48B	✓	✓	R-ROB2/10-EMPA48B
87X	FLOTADOR ROBUSTA 2/10 1F	✓	✓	R-ROB2/10-FLOTADOR

DESPIECE

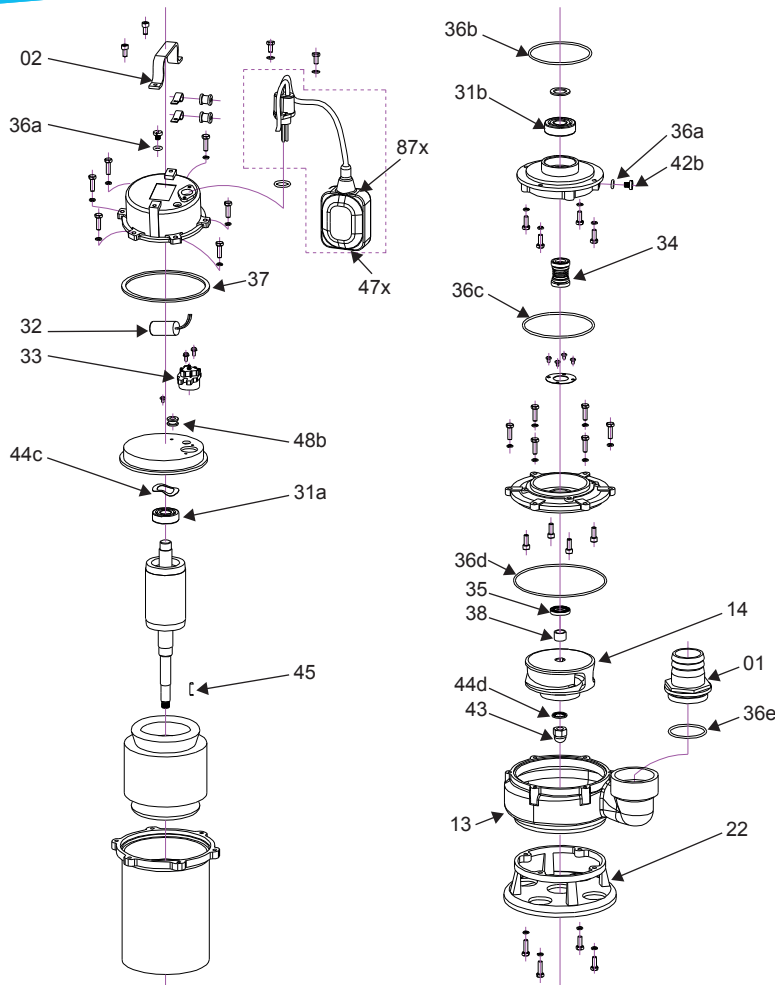


TABLA DE REFACCIONES

POSICIÓN	REFACCIÓN	ROBUSTA2.5/20/1230A	ROBUSTA2.5/20/3230	CÓDIGO
01	CONECTOR MANGUERA	✓	✓	R-ROB2.5/20 ADAP
02	ASA ROBUSTA	✓	✓	R-ROB2.5/20-ASA
13	CUERPO DE BOMBA	✓	✓	R-ROB2.5/CBOMBA2HP
14	IMPULSOR	✓	✓	R-ROB2.5/20-IMP
22	PIE DE BOMBA	✓	✓	R-ROB2.5/PBOMBA2HP
31a	BALERO SUPERIOR	✓	✓	R-ROB2.5/20-BALSUP
31b	BALERO INFERIOR	✓	✓	R-ROB2.5/20-BALINF
32	CAPACITOR 35UF	✓	✓	R-ROB2.5/20CAP35UF
33	RELE	✓	✓	R-ROB2.5/20-RELE1 R-ROB2.5/20-RELE2
34	SELLO MECÁNICO	✓	✓	R-ROB2.5/20-SELLOM
35	RETÉN	✓	✓	R-ROB2.5/20-RETFEN
36a	EMPAQUE	✓	✓	R-ROB2.5/20-EMP36A
36b		✓	✓	R-ROB2.5/20-EMP36B
36c		✓	✓	R-ROB2.5/20-EMP36C
36d		✓	✓	R-ROB2.5/20-EMP36D
36e		✓	✓	R-ROB2.5/20-EMP36E
37	JUNTA TORICA	✓	✓	R-ROB2.5/20-JTORIC
38	BUJE PARA FLECHA	✓	✓	R-ROB2.5/20-BUJEF
42b	TORNILLO 42B	✓	✓	R-ROB2.5/20-TOR42B
43	TUERCA 43B	✓	✓	R-ROB2.5/20-TUER43
44c	ARANDELA	✓	✓	R-ROB2.5/20-ARA44C
44d	ARANDELA	✓	✓	R-ROB2.5/20-ARA44D
45	CUÑA	✓	✓	R-ROB2.5/20-CUÑA
47X	CONECTOR 10M	✓	✓	R-ROB2.5/20-CON230 R-ROB2.5/20-CON
48b	EMPAQUE 48B	✓	✓	R-ROB2.5/20-EMP48B
87X	FLOTADOR ROBUSTA	✓	✓	R-ROB2.5/20-FLOTAD

DESPIECE

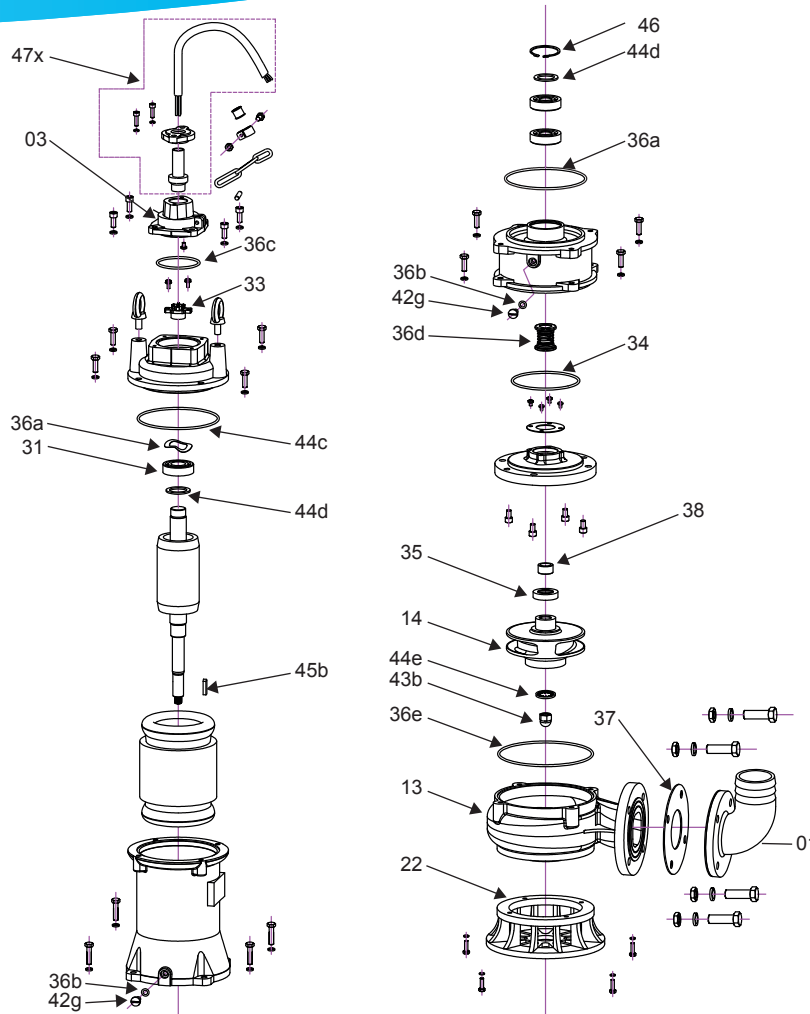


TABLA DE REFACCIONES

POSICIÓN	REFACCIÓN	ROBUSTA2.5/30/3230	CÓDIGO
01	CONECTOR MANGUERA	✓	R-ROB2.5-CONM
03	BASE PARA CONECTOR	✓	R-ROB2.5-3/30-BCON
13	CUERPO DE BOMBA	✓	R-ROB2.5/CBOMBA3HP
14	IMPULSOR	✓	R-ROB2.5/30-IMP
22	PIE DE BOMBA	✓	R-ROB2.5/PBOMBA3HP
31	BALERO	✓	R-ROB2.5-3/30-BAL
33	RELE	✓	R-ROB2.5-3/30-RELE
34	SELLO MECÁNICO	✓	R-ROB2.5-3/30-SM
35	RETÉN	✓	R-ROB2.5-3/30-RET
36a	EMPAQUE	✓	R-ROB2.5-3/30-EMPA
36b		✓	R-ROB2.5-3/30-EMPB
36c		✓	R-ROB2.5-3/30-EMPC
36d		✓	R-ROB2.5-3/30-EMPD
36e		✓	R-ROB2.5-3/30-EMPE
37	EMPAQUE BRIDA	✓	R-ROB2.5-3/30-EMBR
38	BUJE DE FLECHA	✓	R-ROB2.5-3/30-BUJF
42g	TORNILLOS 42B	✓	R-ROB2.5-3/30-TORG
43b	TUERCA 43B	✓	R-ROB2.5-3/30-TUEB
44c	ARANDELA	✓	R-ROB2.5-3/30-ARAC
44d		✓	R-ROB2.5-3/30-ARAD
44e		✓	R-ROB2.5-3/30-ARAE
45b	CUÑA	✓	R-ROB2.5-3/30-CUÑA
46	CANDADO	✓	R-ROB2.5-3/30-CAND
47X	CONECTOR 10M	✓	R-ROB2.5-3/30-CON

DESPIECE

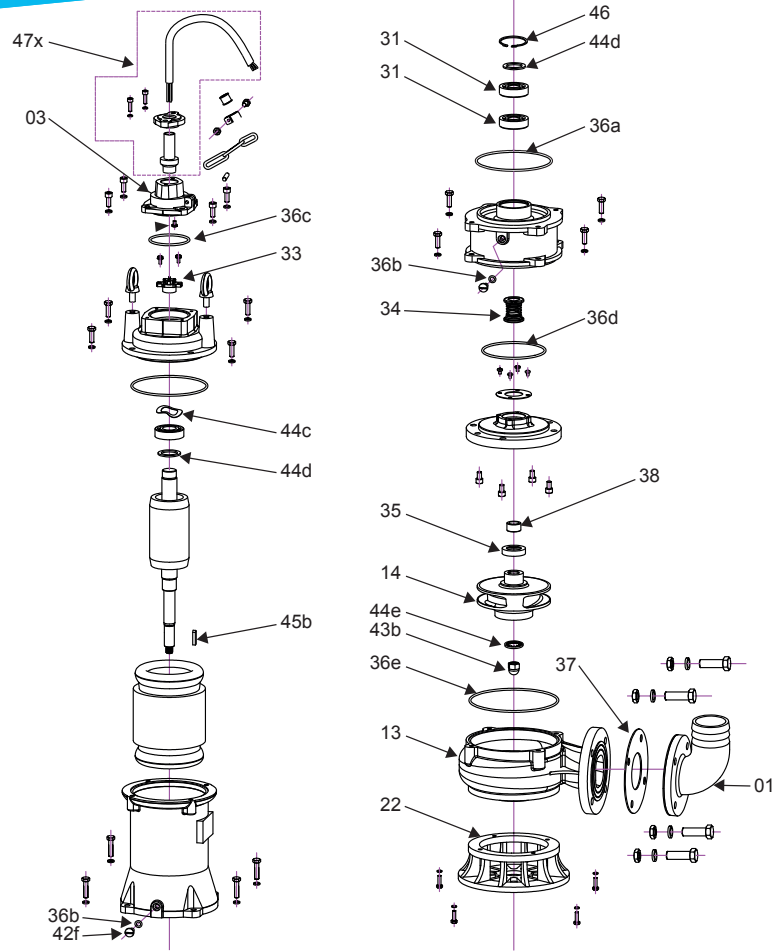


TABLA DE REFACCIONES

POSICIÓN	REFACCIÓN	ROBUSTA2.5/40/3230	CÓDIGO
01	CONECTOR MANGUERA	✓	R-ROB2.5-CONM
03	BASE PARA CONECTOR	✓	R-ROB2.5-3/40-BCON
13	CUERPO DE BOMBA	✓	R-ROB2.5/CBOMBA4HP
14	IMPULSOR	✓	R-ROB2.5/40-IMP
22	PIE DE BOMBA	✓	R-ROB2.5/PBOMBA4HP
31	BALERO	✓	R-ROB2.5-3/40-BAL
33	RELÉ	✓	R-ROB2.5-3/40-RELE
34	SELLO MECÁNICO	✓	R-ROB2.5-3/40-SM
35	RETÉN	✓	R-ROB2.5-3/40-RETE
36a	EMPAQUE	✓	R-ROB2.5-3/40-E36A
36b		✓	R-ROB2.5-3/40-E36B
36c		✓	R-ROB2.5-3/40-E36C
36d		✓	R-ROB2.5-3/40-E36D
36e		✓	R-ROB2.5-3/40-E36E
37	EMPAQUE BRIDA	✓	R-ROB2.5-3/40-EMPB
38	BUJÉ PARA FLECHA	✓	R-ROB2.5-3/40-BUJF
42f	TORNILLOS 42F	✓	R-ROB2.5-3/40-T42F
43b	TUERCA 43B	✓	R-ROB2.5-3/40-T43B
44c	ARANDELA	✓	R-ROB2.5-3/40-A44C
44d		✓	R-ROB2.5-3/40-A44D
44e		✓	R-ROB2.5-3/40-A44E
45b	CUÑA	✓	R-ROB2.5-3/40-CUÑA
46	CANDADO	✓	R-ROB2.5-3/40-CAND
47X	CONECTOR 10M	✓	R-ROB2.5-3/40-CON

DESPIECE

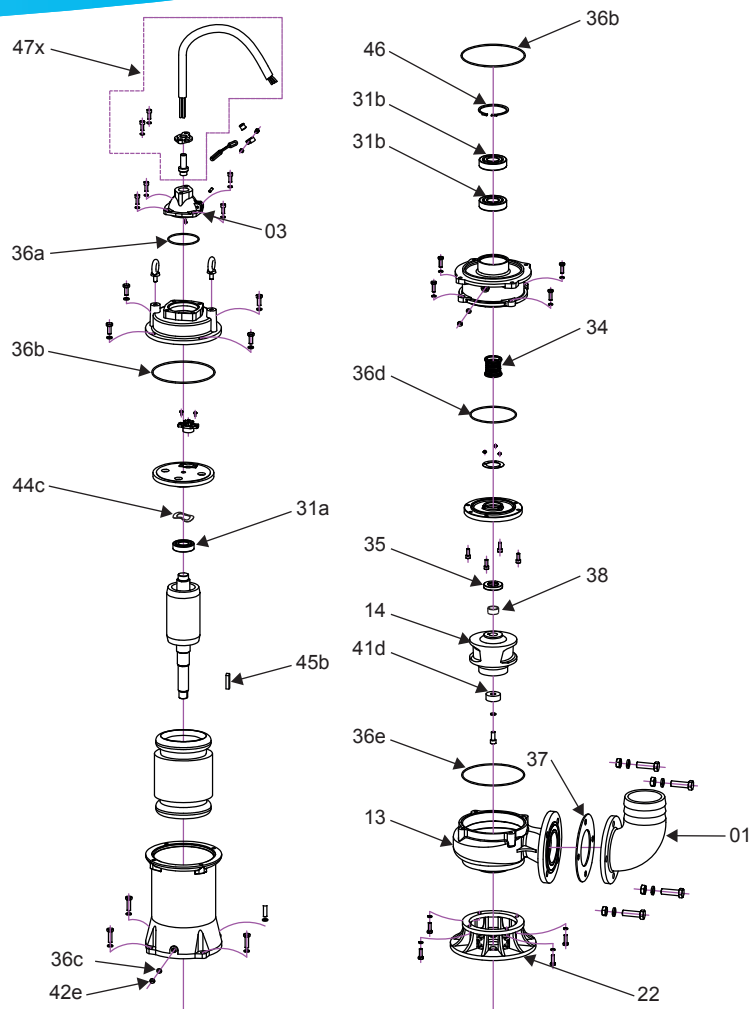


TABLA DE REFACCIONES

POSICIÓN	REFACCIÓN	ROBUSTA.2.5/50/3230	ROBUSTA.2.5/50/3460	CÓDIGO
		✓	✓	
01	CONECTOR MANGUERA	✓	✓	R-ROB2.5-CONM
03	BASE PARA CONECTOR	✓	✓	R-ROB2.5-4/50-BCON
13	CUERPO DE BOMBA	✓	✓	R-ROB2.5/CBOMBA5HP
14	IMPULSOR	✓	✓	R-ROB2.5/50-IMP
22	PIE DE BOMBA	✓	✓	R-ROB2.5/PBOMBA5HP
31a	BALERO	✓	✓	R-ROB2.5-4/50-B31A
31b	RELÉ	✓	✓	R-ROB2.5-4/50-B31B
34	SELLO MECÁNICO	✓	✓	R-ROB2.5-4/50-SM
35	RETÉN	✓	✓	R-ROB2.5-4/50-RETE
36a	EMPAQUE	✓	✓	R-ROB2.5-4/50-E36A
36b		✓	✓	R-ROB2.5-4/50-E36B
36c		✓	✓	R-ROB2.5-4/50-E36C
36d		✓	✓	R-ROB2.5-4/50-E36D
36e		✓	✓	R-ROB2.5-4/50-E36E
37	EMPAQUE BRIDA	✓	✓	R-ROB2.5-4/50-EMPB
38	BUJE FLECHA	✓	✓	R-ROB2.5-4/50-BF
41d	DISTANCIADOR 41D	✓	✓	R-ROB2.5-4/50-D41D
42e	TORNILLO 42E	✓	✓	R-ROB2.5-4/50-T42E
44c	ARANDELA 44C	✓	✓	R-ROB2.5-4/50-A44C
45b	CUÑA	✓	✓	R-ROB2.5-4/50-CUÑA
46	CANDADO	✓	✓	R-ROB2.5-4/50-CAND
47X	CONECTOR 10M	✓	✓	R-ROB2.5/20-CON323

DESPIECE

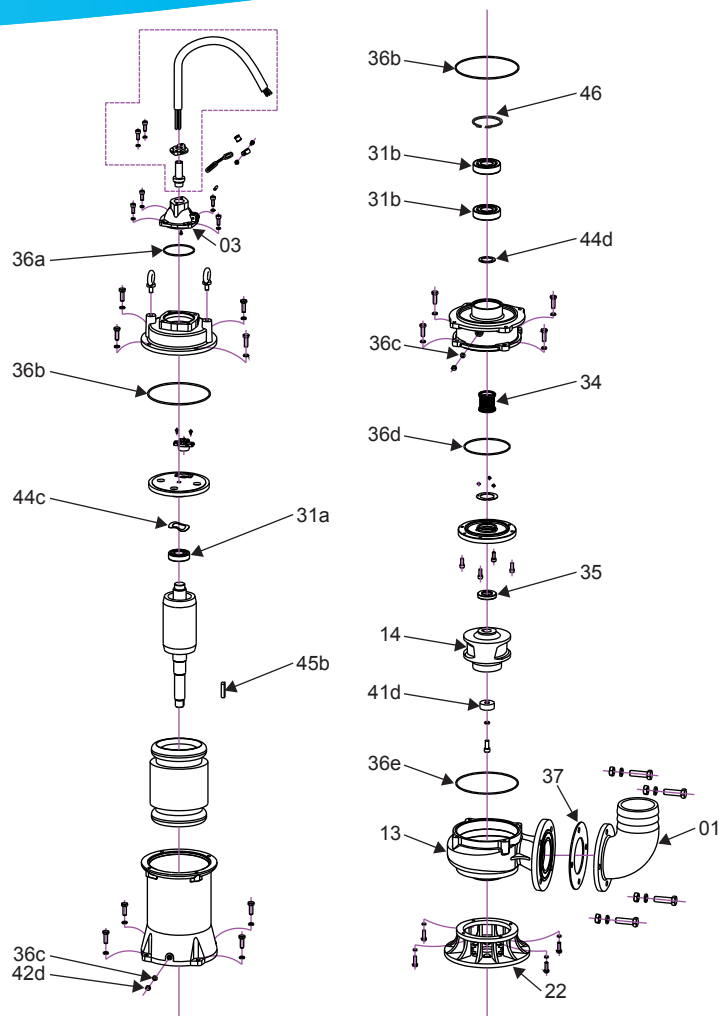


TABLA DE REFACCIONES

POSICIÓN	REFACCIÓN	ROBUSTA2/75/3230	ROBUSTA2/75/3460	CÓDIGO
01	CONECTOR MANGUERA	✓	✓	R-ROB2/75-CONM
03	BASE PARA CONECTOR	✓	✓	R-ROB2/75-BCON
13	CUERPO DE BOMBA	✓	✓	R-ROB2/CBOMBA7.5HP
14	IMPULSOR	✓	✓	R-ROB2/75-IMP
22	PIE DE BOMBA	✓	✓	R-ROB2/PBOMBA7.5HP
31a	BALERO	✓	✓	R-ROB2/75-B31A
31b		✓	✓	R-ROB2/75-B31B
34	SELLO MECÁNICO	✓	✓	R-ROB2/75-SM
35	RETÉN	✓	✓	R-ROB2/75-RETE
36a	EMPAQUE	✓	✓	R-ROB2/75-E36A
36b		✓	✓	R-ROB2/75-E36B
36c		✓	✓	R-ROB2/75-E36C
36d		✓	✓	R-ROB2/75-E36D
36e		✓	✓	R-ROB2/75-E36E
37	EMPAQUE BRIDA	✓	✓	R-ROB2/75-EMPB
41d	BUJE PARA FLECHA	✓	✓	R-ROB2/75-BF
42d	TORNILLO 42D	✓	✓	R-ROB2/75-T42D
44c	ARANDELA	✓	✓	R-ROB2/75-A44C
44d		✓	✓	R-ROB2/75-A44D
45b	CUÑA	✓	✓	R-ROB2/75-CUÑA
46	CANDADO	✓	✓	R-ROB2/75-CAND
47X	CONECTOR 10M	✓	✓	R-ROB2/75-CON

DESPIECE

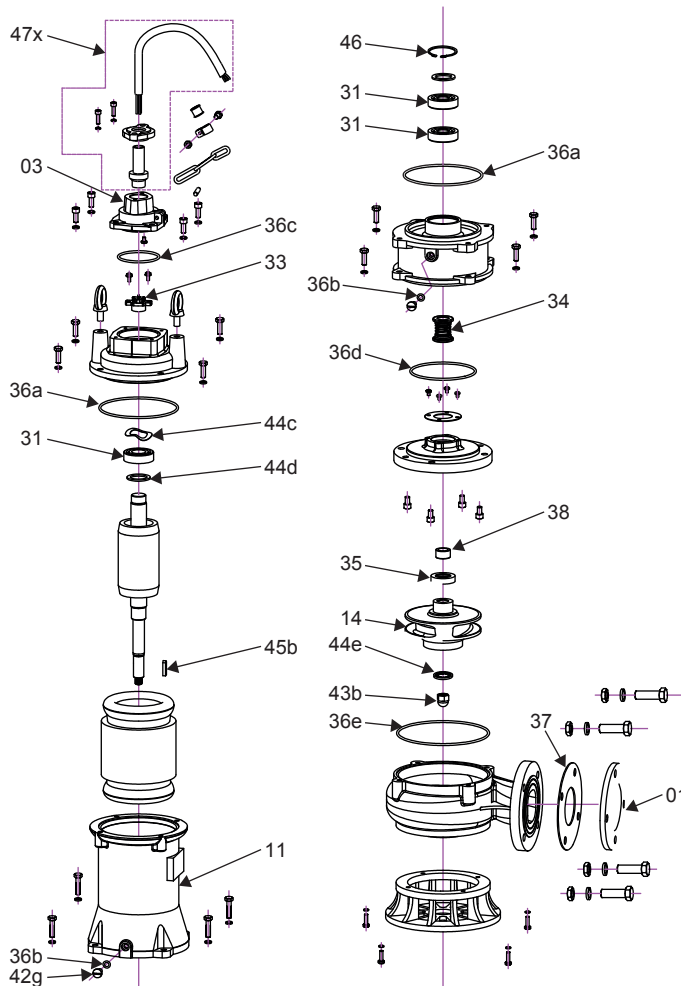


TABLA DE REFACCIONES

POSICIÓN	REFACCIÓN	ROBUSTA3/30/3230	CÓDIGO
01	BRIDA 3"	✓	R-ROB3-BRIDA
03	BASE PARA CONECTOR	✓	R-ROB2.5-3-30-BCON
14	IMPULSOR	✓	R-ROB3/30-IMP
31	BALERO	✓	R-ROB2.5-3/30-BAL
33	RELE	✓	R-ROB2.5-3/30-RELE
34	SELLO MECÁNICO	✓	R-ROB2.5-3/30-SM
35	RETÉN	✓	R-ROB2.5-3/30-RET
36a	EMPAQUE	✓	R-ROB2.5-3/30-EMPA
36b		✓	R-ROB2.5-3/30-EMPB
36c		✓	R-ROB2.5-3/30-EMPC
36d		✓	R-ROB2.5-3/30-EMPD
36e		✓	R-ROB2.5-3/30-EMPE
37	EMPAQUE BRIDA	✓	R-ROB2.5-3/30-EMPB
38	BUJE DE FLECHA	✓	R-ROB2.5-3/30-BUJF
42g	TORNILLOS 42B	✓	R-ROB2.5-3/30-TORG
43b	TUERCA 43B	✓	R-ROB2.5-3/30-TUEB
44c	ARANDELA	✓	R-ROB2.5-3/30-ARAC
44d		✓	R-ROB2.5-3/30-ARAD
44e		✓	R-ROB2.5-3/30-ARAE
45b	CUÑA	✓	R-ROB2.5-3/30-CUÑA
46	CANDADO	✓	R-ROB2.5-3/30-CAND
47X	CONECTOR 10M	✓	R-ROB2.5-3/30-CON

DESPIECE

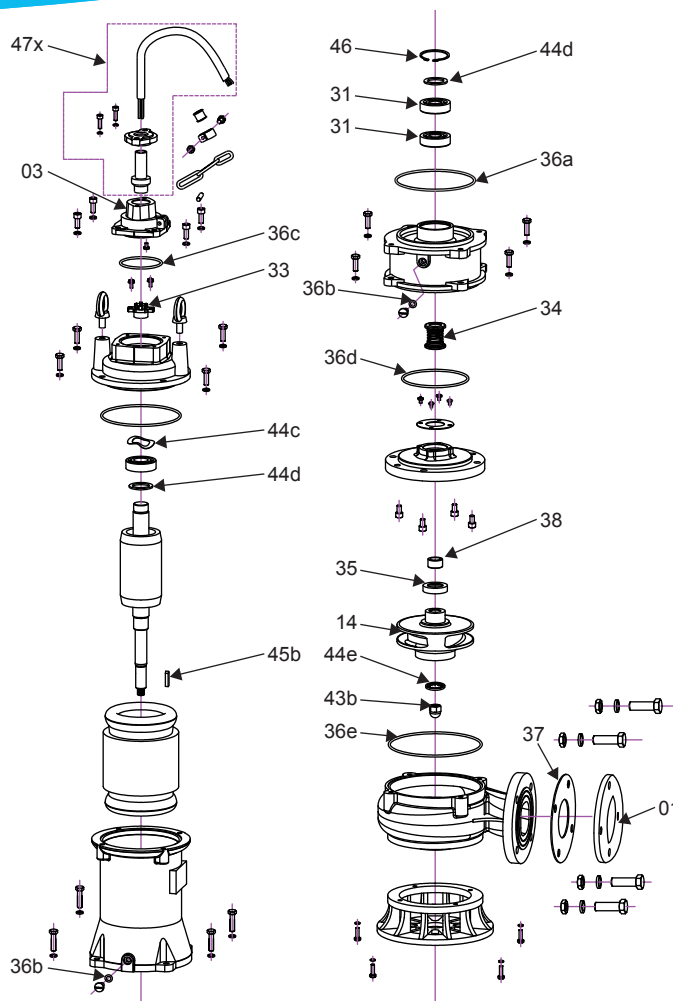


TABLA DE REFACCIONES

POSICIÓN	REFACCIÓN	ROBUSTA3/40/3230	CÓDIGO
01	BRIDA 3"	✓	R-ROB3-BRIDA
03	BASE PARA CONECTOR	✓	R-ROB2.5-3/40-BCON
14	IMPULSOR	✓	R-ROB3/40-IMP
31	BALERO	✓	R-ROB2.5-3/40-BAL
33	RELÉ	✓	R-ROB2.5-3/40-RELE
34	SELLO MECÁNICO	✓	R-ROB2.5-3/40-SM
35	RETÉN	✓	R-ROB2.5-3/40-RETE
36a	EMPAQUE	✓	R-ROB2.5-3/40-E36A
36b		✓	R-ROB2.5-3/40-E36B
36c		✓	R-ROB2.5-3/40-E36C
36d		✓	R-ROB2.5-3/40-E36D
36e		✓	R-ROB2.5-3/40-E36E
37	EMPAQUE BRIDA	✓	R-ROB2.5-3/40-EMPB
38	BUJE PARA FLECHA	✓	R-ROB2.5-3/40-BUJF
42f	TORNILLOS 42F	✓	R-ROB2.5-3/40-T42F
43b	TUERCA 43B	✓	R-ROB2.5-3/40-T43B
44c	ARANDELA	✓	R-ROB2.5-3/40-A44C
44d		✓	R-ROB2.5-3/40-A44D
44e		✓	R-ROB2.5-3/40-A44E
45b	CUÑA	✓	R-ROB2.5-3/40-CUÑA
46	CANDADO	✓	R-ROB2.5-3/40-CAND
47X	CONECTOR 10M	✓	R-ROB2.5-3/40-CON

DESPIECE

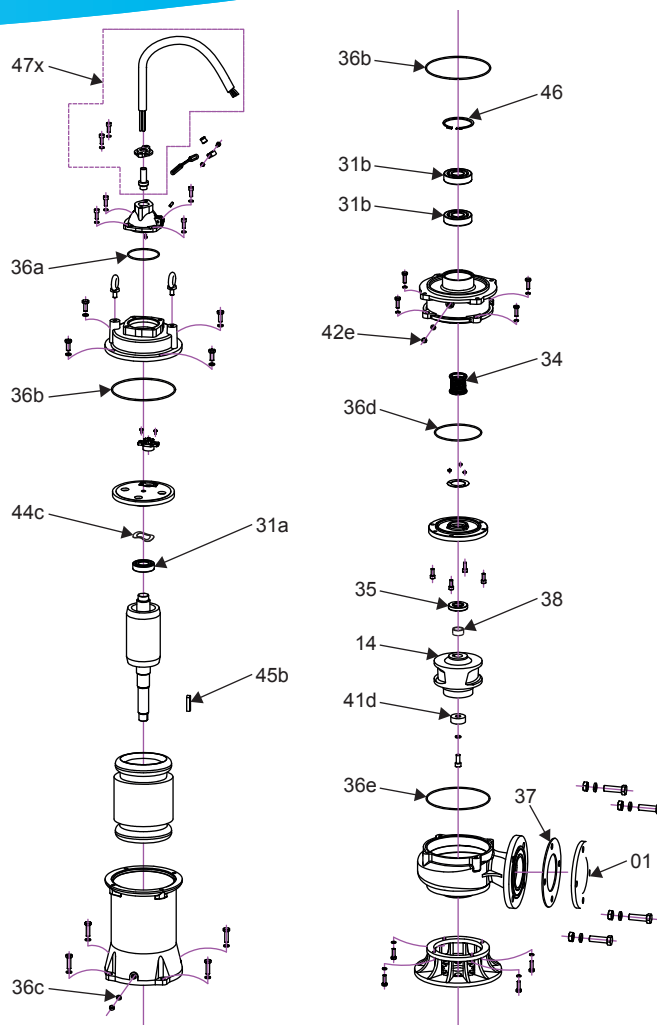


TABLA DE REFACCIONES

POSICIÓN	REFACCIÓN	ROBUSTA4/50/3230	ROBUSTA4/50/3460	CÓDIGO
		✓	✓	
01	BRIDA 4"	✓	✓	R-ROB4-BRIDA
03	BASE PARA CONECTOR	✓	✓	R-ROB2.5-4/50-BCON
14	IMPULSOR	✓	✓	R-ROB4/50-IMP
31a	BALERO	✓	✓	R-ROB2.5-4/50-B31A
31b	RELÉ	✓	✓	R-ROB2.5-4/50-B31B
34	SELLO MECÁNICO	✓	✓	R-ROB2.5-4/50-SM
35	RETÉN	✓	✓	R-ROB2.5-4/50-RETE
36a	EMPAQUE	✓	✓	R-ROB2.5-4/50-E36A
36b		✓	✓	R-ROB2.5-4/50-E36B
36c		✓	✓	R-ROB2.5-4/50-E36C
36d		✓	✓	R-ROB2.5-4/50-E36D
36e		✓	✓	R-ROB2.5-4/50-E36E
37	EMPAQUE BRIDA	✓	✓	R-ROB2.5-4/50-EMPB
38	BUJE FLECHA	✓	✓	R-ROB2.5-4/50-BF
41d	DISTANCIADOR 41D	✓	✓	R-ROB2.5-4/50-D41D
42e	TORNILLO 42E	✓	✓	R-ROB2.5-4/50-T42E
44c	ARANDELA 44C	✓	✓	R-ROB2.5-4/50-A44C
45b	CUÑA	✓	✓	R-ROB2.5-4/50-CUÑA
46	CANDADO	✓	✓	R-ROB2.5-4/50-CAND
47X	CONECTOR 10M	✓	✓	R-ROB2.5-4/50-CON

DESPIECE

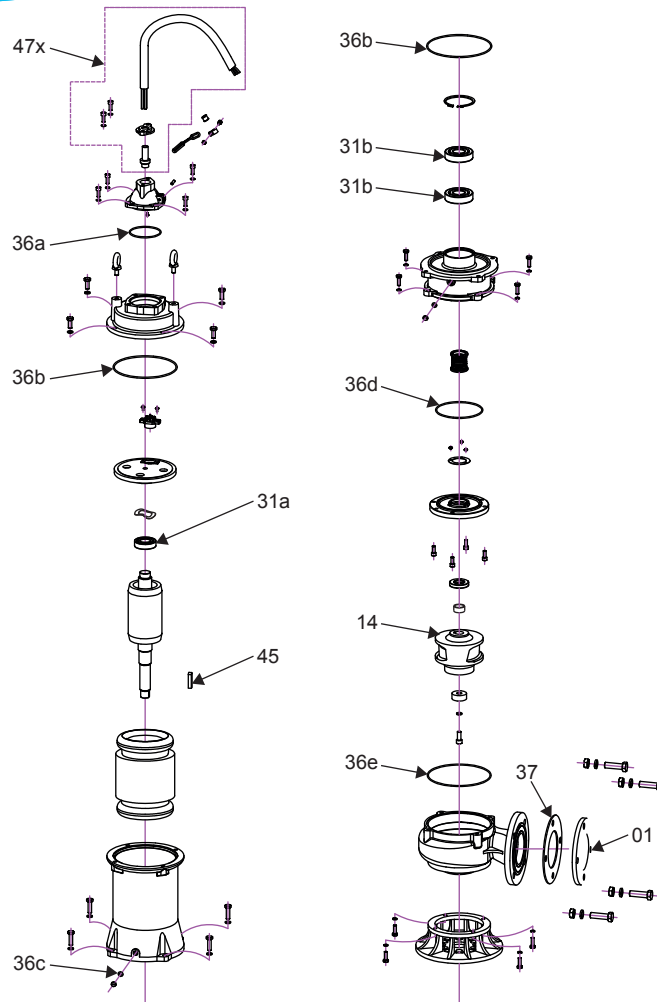


TABLA DE REFACCIONES

POSICIÓN	REFACCIÓN	ROBUSTA4/100/3230	ROBUSTA4/100/3460	CÓDIGO
01	BRIDA 4"	✓	✓	R-ROB4-BRIDA
14	IMPULSOR	✓	✓	R-ROB4/100-IMP
31a	BALERO	✓	✓	R-ROB4/100-B31A
31b		✓	✓	R-ROB4/100-B31B
34a	SELLO MECÁNICO	✓	✓	R-ROB4/100-SM34A
34b		✓	✓	R-ROB4/100-SM34B
36a	EMPAQUE	✓	✓	R-ROB4/100-E36A
36b		✓	✓	R-ROB4/100-E36B
36c		✓	✓	R-ROB4/100-E36C
36d		✓	✓	R-ROB4/100-E36D
36e		✓	✓	R-ROB4/100-E36E
37	EMPAQUE BRIDA	✓	✓	R-ROB4/100-EMPB
41a	BUJE PARA FLECHA	✓	✓	R-ROB4/100-BF
42b	TORNILLO 42D	✓	✓	R-ROB2/75-T42D
45	CUÑA	✓	✓	R-ROB4/100-CUÑA
47X	CONECTOR 10M	✓	✓	R-ROB4/100-CON